

EVOLUTION OF A DOOR KNOB



Cut

A billet of brass is cut from bar stock of the correct diameter.



Forged

The knob's shape after the heated billet is pounded into the die.



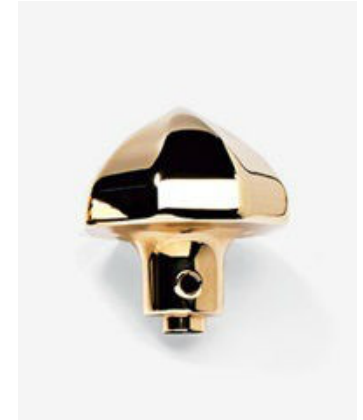
Trimmed

A stamping press takes off the thin metal skirt leftover by the forge.



Ground

An abrasive grinding belt strips off forge oxidation.



Polished

Polished Polishing wheels smooth away the grinding marks.